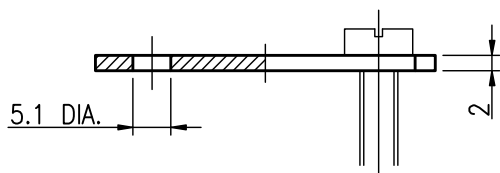
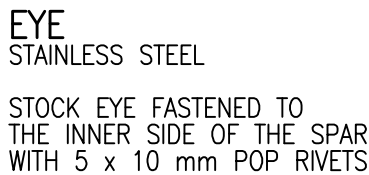
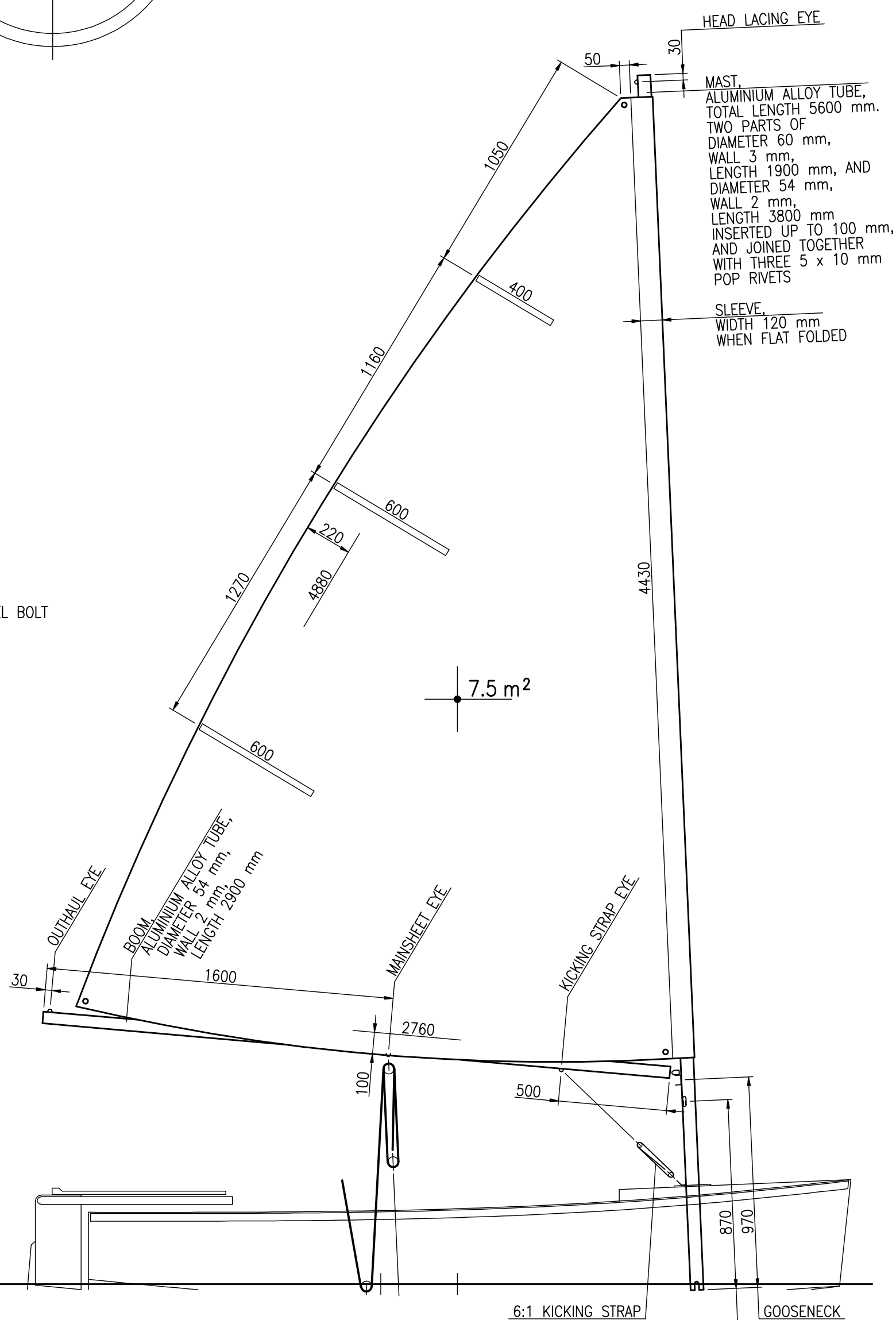


KICKING STRAP EYE PLATE
STAINLESS STEEL
FASTENED WITH M5 STAINLESS STEEL BOLTS



TOE STRAP PLATE
STAINLESS STEEL

FASTENED THROUGH
THE TOE STRAP WITH M5
STAINLESS STEEL BOLTS



SMALL SIZE V-CLEAT FOR
THE CUNNINGHAM, TURNED 45°
TO THE BOAT CENTRELINE AND
FASTENED ON STARBOARD SIDE
WITH POP RIVETS. 7 mm DIA.
HOLE ON OPPOSITE SIDE FOR
THE CUNNINGHAM END STOP
KNOT

| | | |
|-----------------------|-------|---------------------------------|
| MAINSHEET | 10 mm | BRAIDED MATT POLYESTER |
| DAGGERBOARD HANDLE | 8 mm | PLAITED OR BRAIDED POLYESTER |
| KICKING STRAP | 5 mm | |
| CUNNINGHAM | | |
| OUTHHAUL | | |
| MAIN HEAD LACING | | |
| RUDDER BLADE DOWNHAUL | | |

| | | |
|--|------|---|
| KICKING STRAP EXTENSION MAINSHEET EXTENSION | 3 mm | STAINLESS STEEL 7 x 7 PVC COVERED |
|--|------|---|

3.5m

SAIL AND SPARS
SHEET 35.4/5, SIZE A2
SCALE 1:1, 1:20

RADOSŁAW WERSZKO
SEPTEMBER 2012