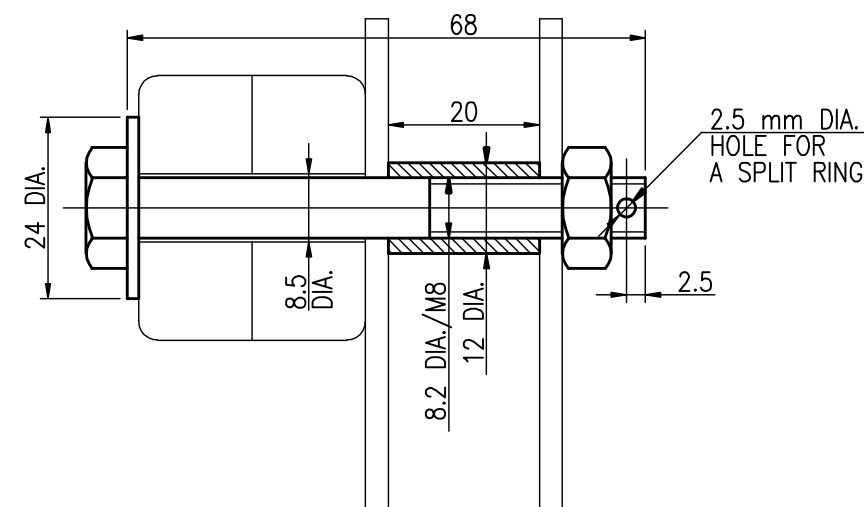
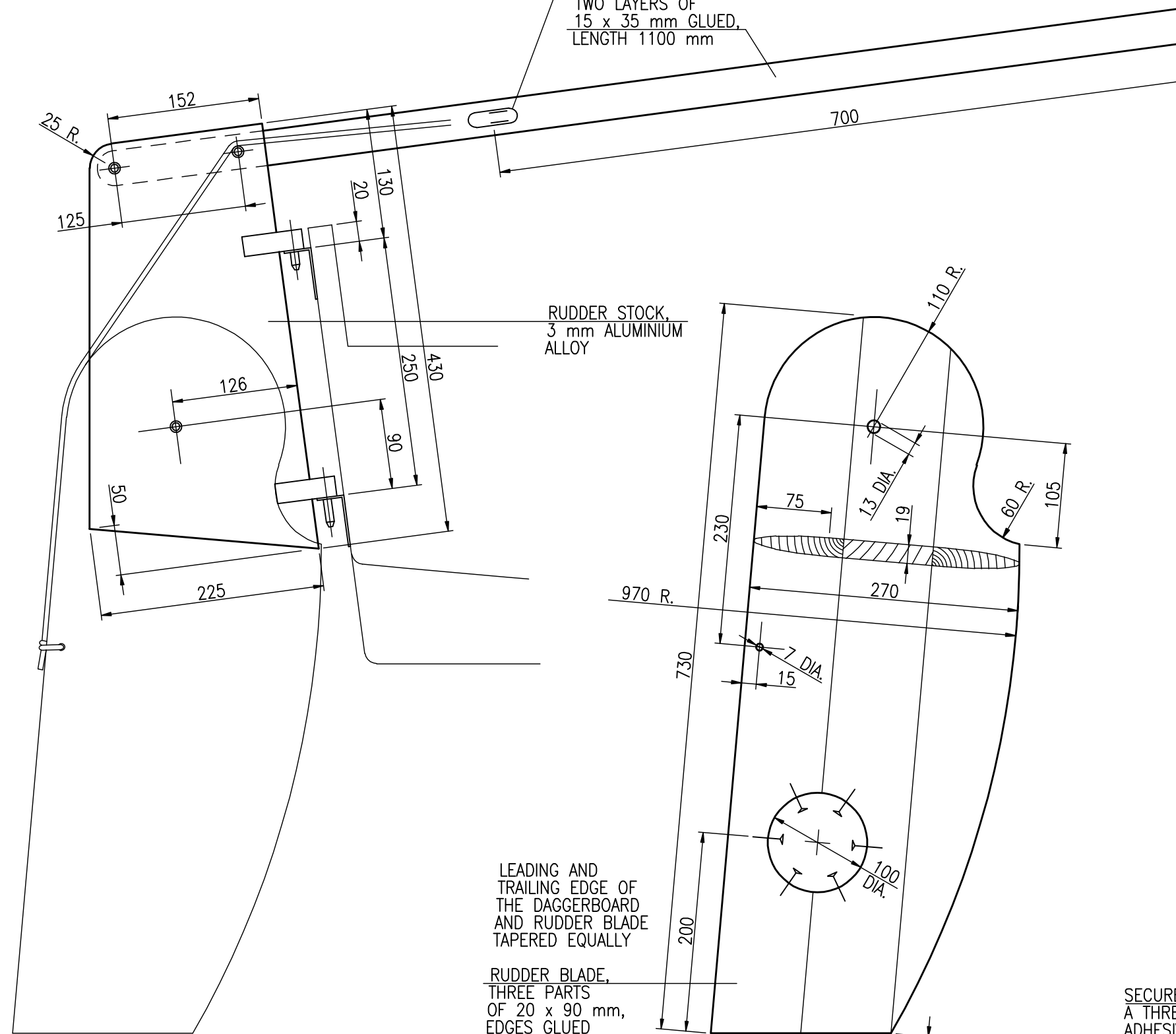


TILLER AND STOCK CONNECTION STAINLESS STEEL



SMALL SIZE V-CLEAT FOR
THE RUDDER BLADE UPHAUL

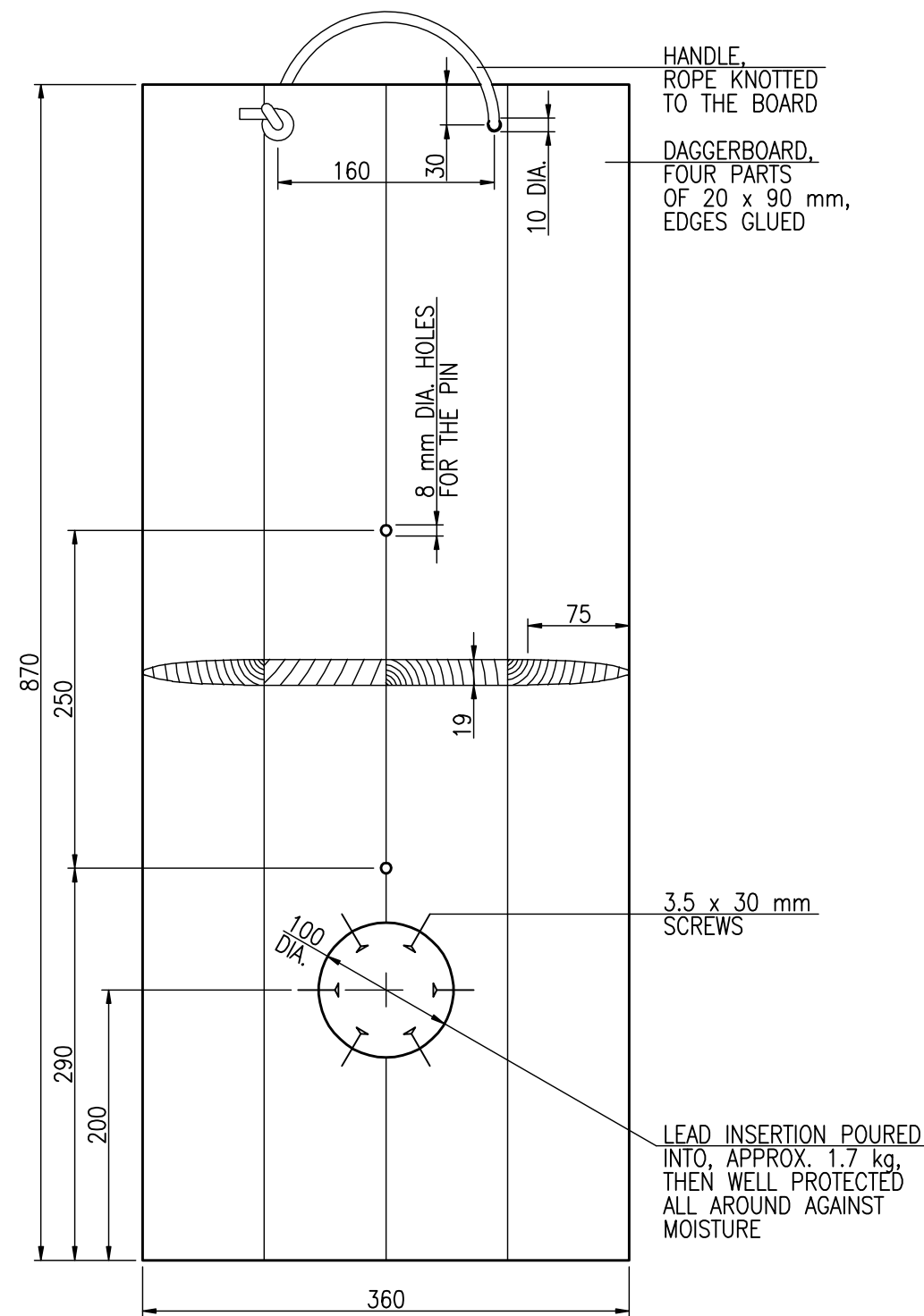
TILLER, HARDWOOD,
TWO LAYERS OF
15 x 35 mm GLUED,
LENGTH 1100 mm



RUDDER STOCK,
3 mm ALUMINIUM
ALLOY

LEADING AND
TRAILING EDGE OF
THE DAGGERBOARD
AND RUDDER BLADE
TAPERED EQUALLY

RUDDER BLADE,
THREE PARTS
OF 20 x 90 mm,
EDGES GLUED

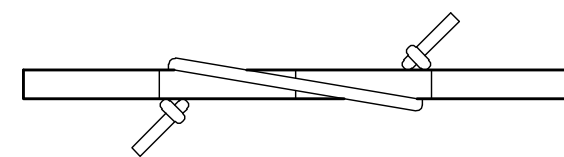


HANDLE
ROPE KNOTTED
TO THE BOARD

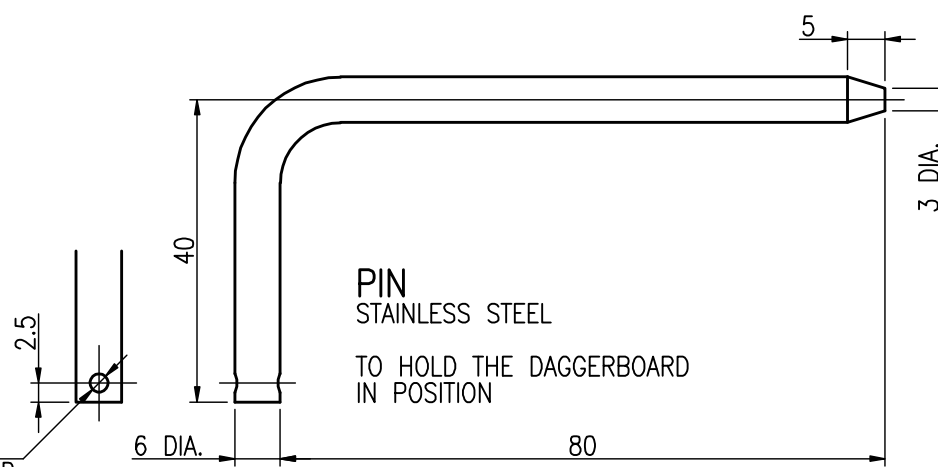
DAGGERBOARD,
FOUR PARTS
OF 20 x 90 mm,
EDGES GLUED

3.5 x 30 mm
SCREWS

LEAD INSERTION POURED
INTO, APPROX. 1.7 kg,
THEN WELL PROTECTED
ALL AROUND AGAINST
MOISTURE

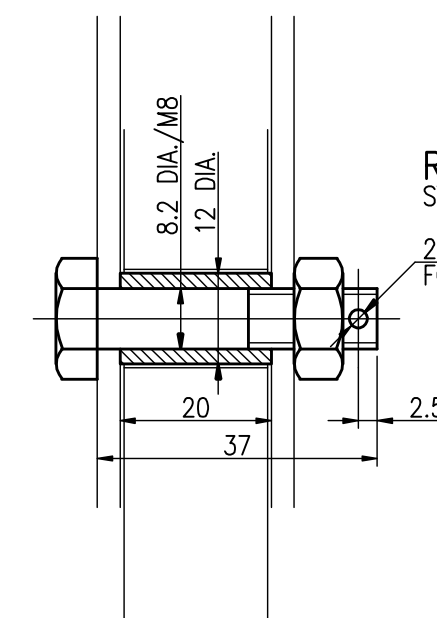


2.5 mm DIA. HOLE
FOR A SPLIT RING AND
RETAINING LANIARD



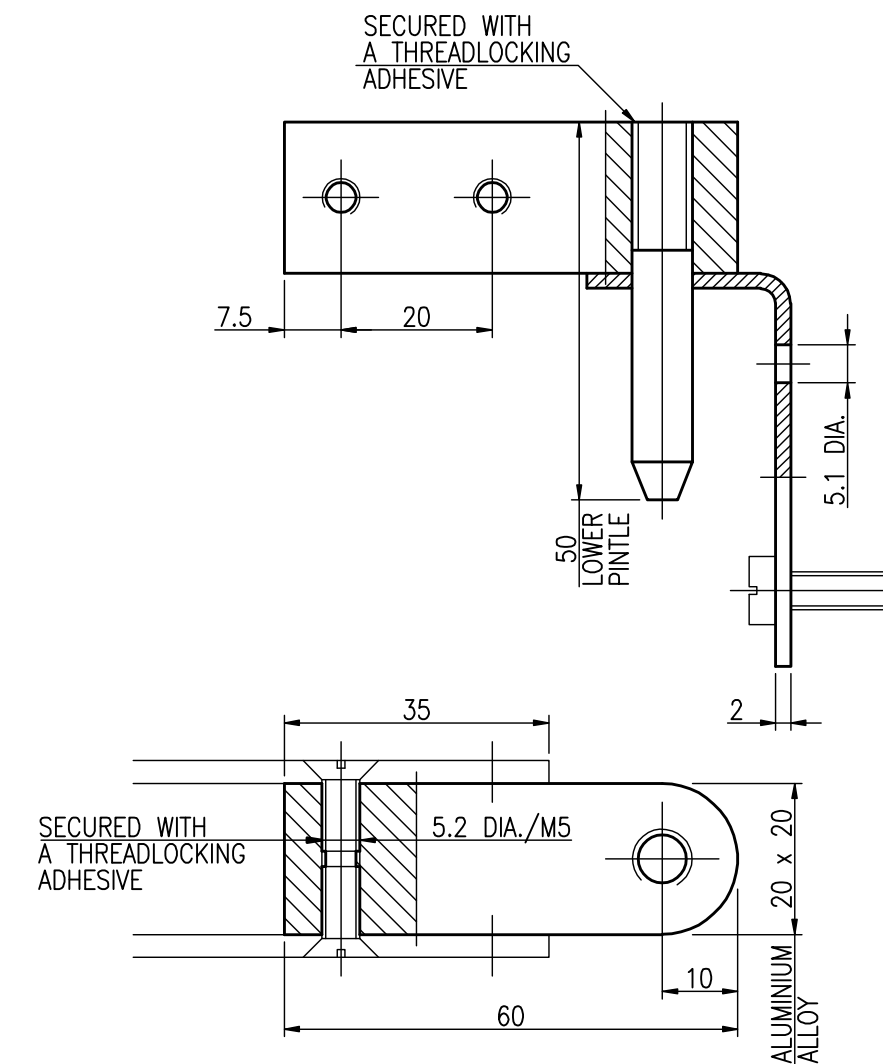
PIN
STAINLESS STEEL

TO HOLD THE DAGGERBOARD
IN POSITION



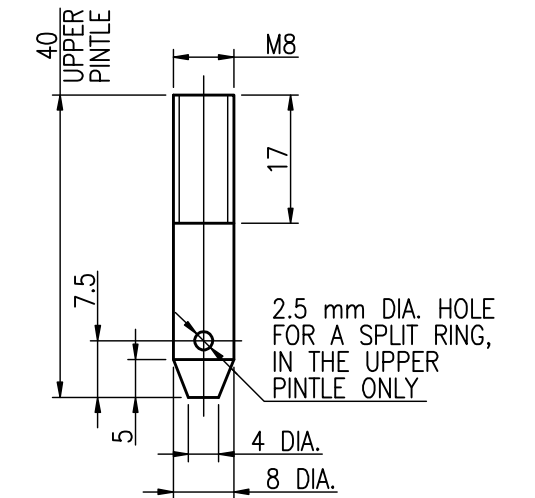
RUDDER BLADE PIVOT
STAINLESS STEEL

2.5 mm DIA. HOLE
FOR A SPLIT RING



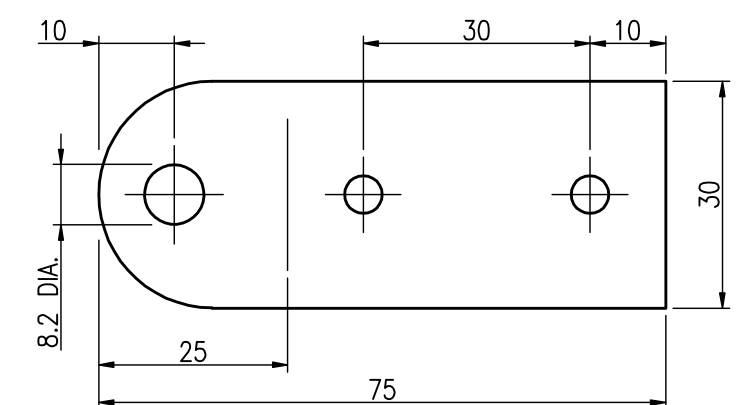
SECURED WITH
A THREADLOCKING
ADHESIVE

SECURED WITH
A THREADLOCKING
ADHESIVE



PINTLE AND GUDGEON
STAINLESS STEEL

GUDGEONS FASTENED
TO THE TRANSOM WITH
M5 STAINLESS STEEL BOLTS



4.2m

DAGGERBOARD AND RUDDER
SHEET 42.4/4, SIZE A2
SCALE 1:1, 1:5

RADOSŁAW WERSZKO
SEPTEMBER 2008